

# Wallet Instructions

- 2-3 Illustrated instructions
- 4 Video Instruction links
- 5 Material info

# Wallet

The Wallet is a traditional fly wallet compatible with the FlyBag System. Use it as a regular fly wallet, or attach it to the FlyBag Harness or Ghillie Cord.

|   |   |   |
|---|---|---|
| T | H | E |
| F | L | Y |
| B | A | G |



FlyBag product is made of highly durable and sustainable **Raw Corium®** which is a blend of recycled spill overs from the Italian leather industry. It's bonded with natural rubber and is very tear resistant and yet soft and elastic. It looks like leather and ages with beauty.

## Product line up

The FlyBag System consists of several interchangeable items with almost no limits in how you can arrange and personalise your own setup.



### FlyBag Hero

The FlyBag Hero is the center piece of the versatile FlyBag System. It is designed to carry your most essential gear close on your chest, easy to reach when you need them.



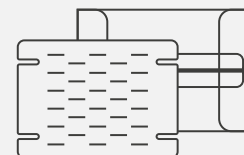
### Ghillie

The Ghillie is an add-on or a stand alone product in the FlyBag System. Attach it to the FlyBag Hero, or use it separate as a 2.0 version of the classic lanyard.



### Wallet

The Wallet is a traditional fly wallet compatible with the FlyBag System. Use it as a regular fly wallet, or attach it to the FlyBag Harness or Ghillie Cord.

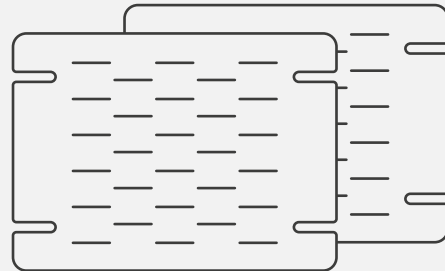
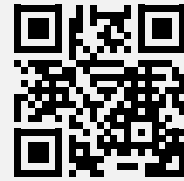


### Patch + Case

The Patch is designed to fit the FlyBag System and the Case has several multi usage functions. The Patch + Case can be used together as a classic fly box.

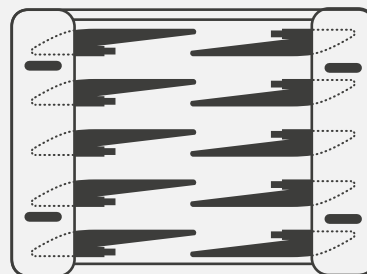
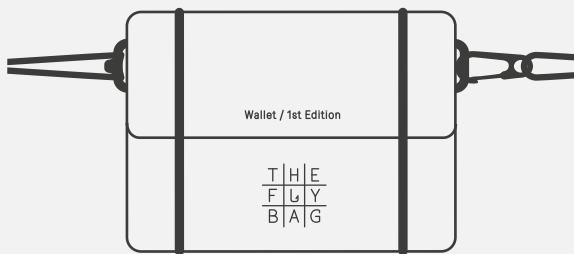
# Wallet

The Wallet is a traditional fly wallet compatible with the FlyBag System. Use it as a regular fly wallet, or attach it to the FlyBag Harness or Ghillie Cord.



## 2 x Patch

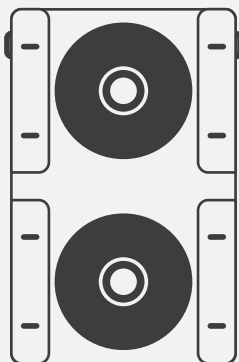
The Patches are replaceable and easy attachable to the Wallet. Made of white and durable SP foam. It has 28 pre cuts for your hook flies, you can buy the Patches separately.



Place the tube flies as illustrated, and gently push and lock them in to position.

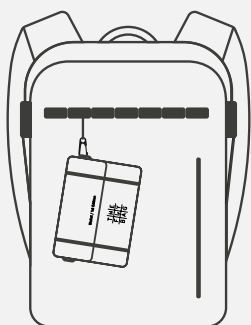
## Connect it to the FlyBag System

Attach the Wallet to the FlyBag Harness with a loop on one side and the carabiner on the other side to hold it on your back as an extra storage.



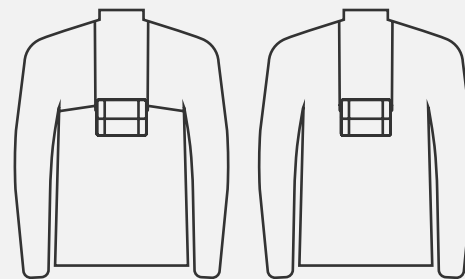
## Holds tippet spools

Snap the tippet spool on the inside of the Wallet.



## Hook it to your backpack

Hook your Wallet to a leash on your backpack or elsewhere.



FlyBag Harness

Ghillie Cord

## Wear it around your neck

Attach it to the FlyBag Harness or Ghillie Cord to wear it around your neck. Cord NOT INCLUDED

### Best Shop Owner

Please place your pricetag here so the customer can read this over stacked info sheet.

# Instruction Videos Wallet

How to rig

<https://www.youtube.com/watch?v=O2uXZ9ssn98&list=PLv8LXruOz7L-FEwAqlA9jwGVpGuvqqYTsc>

## Wallet | Material Spec

**RAW Corium:** 60% Regenerated leather, 40% Natural rubber

**Elastic Cord:** 50% Polyester / 50% Rubber Threads

**Patch:** Low-density Polyethylene



## Our Material

### Raw Corium® / Recycled Leather + Natural Rubber

FlyBag products are made of highly durable and sustainable Raw Corium® which is a blend of recycled spill overs from the Italian leather industry. It's bonded with natural rubber and is very tear resistant. It looks like leather and ages with beauty.



## Sustainability

### Low impact

From day one we aim to keep a low impact on our planet. To do this we put a lot of time in the design process to be able to produce FlyBag in Sweden with as little parts possible.

### Hand made by retired fishermen

Due to our design and development process we can make our products locally without even a factory line. We take great pride in the fact that our products now are assembled by retired fishermen in the heart of Sweden.

### FlyBag LAB

To support sustainable growth and development, we release FlyBag LAB. All FlyBag LAB products are produced in limited edition batches. When we see that the fly fishing community embraces a product, we elevate it to our FlyBag line up. This approach helps us minimize production waste while fueling our passion for developing quality fly fishing products.